

## Q10 Q30 Q60

### MICRO-HARDNESS TESTER

- Vickers, Brinell & Knoop
- 6-fold tool changer
- Universal laboratory machine



**Q10 M** 0.25 g - 10 kg  
**Q30 M** 0.25 g - 31.25 kg  
**Q60 M** 0.25 g - 62.5 kg

- Easy operation with Qpix T2 software
- Operation unit with capacitive touch screen
- Manual XY slide for simple row measurement



**Q10 SMP** 0.05 kg - 10 kg

- Qpix Control 2 Software
- Entry-level model to fully automatic hardness testing for single samples



**Q10 A** 0.25 g - 10 kg  
**Q30 A** 0.25 g - 31.25 kg  
**Q60 A** 0.25 g - 62.5 kg

- Qpix Control 2 software
- Ultra-precise fully automatic XY slide
- CHD/SHD/NHD and row measurement functions



**Q10 A+** 0.25 g - 10 kg  
**Q30 A+** 0.25 g - 31.25 kg  
**Q60 A+** 0.25 g - 62.5 kg

- Qpix Control 2 software
- Ultra-precise fully automatic XY slide
- Integrated sample image camera with panoramic picture function

## Q150

### ROCKWELL HARDNESS TESTER

- with stages of expansion for optic test methods and full automation
- compact and solid for laboratory and production use



**Q150 R** 1 kg - 250 kg

- Qpix T2 software
- 10.1" colour touch display
- Integrated work room lighting



**Q150 M** 1 kg - 250 kg

- Qpix T2 software
- Integrated optic system with high resolution digital camera and long-working-distance lens
- Rockwell, Vickers, Brinell and Knoop possible
- Perfect for difficult accessible test point positions



**Q150 A** 1 kg - 250 kg

- Qpix Control 2 software
- Fully automatic XY slide
- Rockwell, Vickers, Brinell, Knoop
- Up to two optic systems and lenses possible
- Can hold up to 8 jominy samples



**Q150 A+** 1 kg - 250 kg

- Qpix Control 2 software
- Fully automatic XY slide
- Rockwell, Vickers, Brinell, Knoop
- Integrated sample image camera with panoramic picture function

## Q250 Q750 Q3000

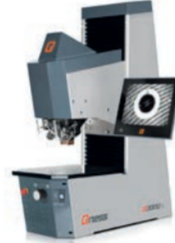
### MAKRO-HARDNESS TESTER

- Vickers, Brinell & Knoop plus Rockwell (optional)
- 6-fold tool changer (optional)



**Q250 CS / C** 0.5 kg - 250 kg  
**Q750 CS / C** 3 kg - 750 kg  
**Q3000 CS / C** 10 kg - 3000 kg

- Qpix T2 software
- Test arm height adjustment via backlash-free roller-mounted spindle
- Ideal for small test samples



**Q250 MS / M / E** 0.5 kg - 250 kg  
**Q750 MS / M / E** 3 kg - 750 kg  
**Q3000 MS / M / E** 10 kg - 3000 kg

- Qpix T2 software
- Movable test head
- For large samples and high clamping forces



**Q250 CA** 0.5 kg - 250 kg  
**Q750 CA** 3 kg - 750 kg

- Fully automated macro unit with cross slide
- Extremely stress resistant, extremely precise



**Q250 A / A+** 0.5 kg - 250 kg  
**Q750 A / A+** 3 kg - 750 kg  
**Q3000 A / A+** 10 kg - 3000 kg

- Qpix Control 2 software
- Fully automated test cycles with customer specific clamping devices
- CE housing with light grid
- For applications as tests on tube segments, rail tracks, SHD tests on crankshafts etc.



**Qness Designer Pedestal**

- Qness designer pedestal

## Qsolution Qradial

### CUSTOMER-SPECIFIC SOLUTIONS

- Conceptualisation and planning of customer-specific solutions
- Design of clamping fixtures



**Qmobile**

- Portable image analyzer for existing Brinell indentations



**Qsolution INTEST**

- Specialised solution for norm-compliant hardness testing and visual image evaluation for relatively inaccessible testing points.



**Qsolution CRANKSHAFTS**

- Rockwell hardness tester for crankshafts
- Manual positioning and automatic hardness testing



**Qsolution MACRO**

- Hardness testing device with customer-specific roller conveyor
- For the manual loading of heavy components



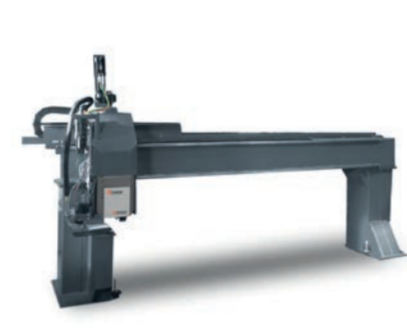
**Qsolution PORTAL**

- Fully automated hardness testing portal acc. to HRB
- Includes a Siemens X-Y-Z axis control



**Qsolution TESTPOINT PREPARATION**

- Test piece preparation (grinding or milling) and hardness testing acc. to HBW 10/3000 in a single set-up
- Compact construction for industrial applications



**Qsolution PORTAL**

- Customer-specific hardness testing portal for large components and steel plate
- Dimensions can be adapted to the needs of each individual customer



**Qradial** 60 kg - 3000 kg

- Fully automated Brinell/Rockwell hardness testing plant
- Integrated test point preparation with milling unit



## Qpix T2 Qpix CONTROL 2

### QNESS SOFTWARE

- Machine-specific software content
- Modern and consistent software design



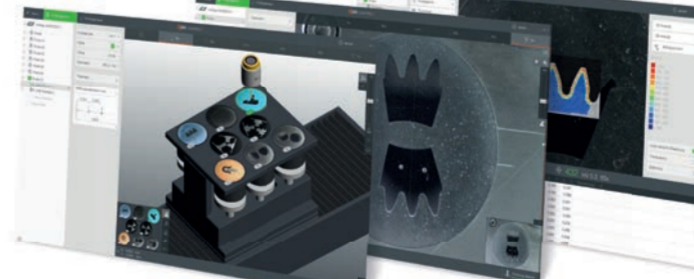
**Qpix T2**

- Large 12" touch optimized user surface
- Fully automated image evaluation
- Comprehensive data and protocol export



**Qpix CONTROL 2**

- Structured batch management
- Effective usage of templates

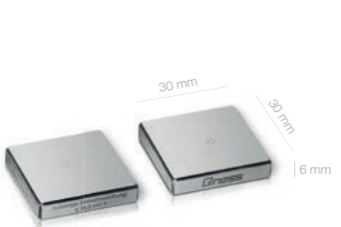


**Qpix CONTROL 2**

- Innovative 3D operating concept
- Professional application of fully automated test programs
- Comprehensive data management

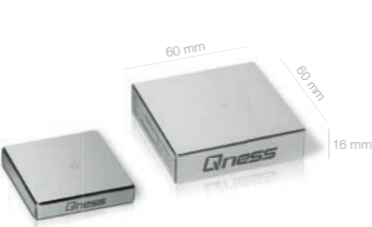
## Premium HARDNESS TEST - BLOCKS

- Premium quality in comprehensive variety



**KNOOP**

- DIN EN ISO 4545-3, ASTM E92
- HK 0,01 / HK 0,015 / HK 0,02 / HK 0,25 / HK 0,05 / HK 0,1 / HK 0,2 / HK 0,3 / HK 0,5 / HK 1 / HK 2



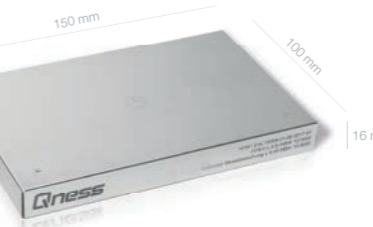
**VICKERS**

- DIN EN ISO 6507-3, ASTM E92
- HK 0,01 / HK 0,015 / HK 0,02 / HK 0,25 / HK 0,05 / HK 0,1 / HK 0,2 / HK 0,3 / HK 0,5 / HK 1 / HK 2 / HK 3 / HK 5 / HK 10 / HK 20 / HK 30 / HK 50 / HK 100



**ROCKWELL**

- DIN EN ISO 6506-3, ASTM E18
- HRA / HRB / HRC / HRD / HRE / HRG / HRK / HRT15N / HR30N / HR45N / HR15T / HR30T / HR45T



**BRINELL**

- DIN EN ISO 6506-3, ASTM E10
- HBW 10/500 / HBW 10/1000 / HBW 10/1500 / HBW 10/3000 / HBW 5/125 / HBW 5/250 / HBW 5/750 / HBW 2,5/31,25 / HBW 2,5/62,5 / HBW 2,5/187,5 / HBW 1/5 / HBW 1/10 / HBW 1/30



**SOFTWARE INKLUSIVE**

- Free access to comprehensive functions
- Comprehensive statistics and assessment
- Logically documented